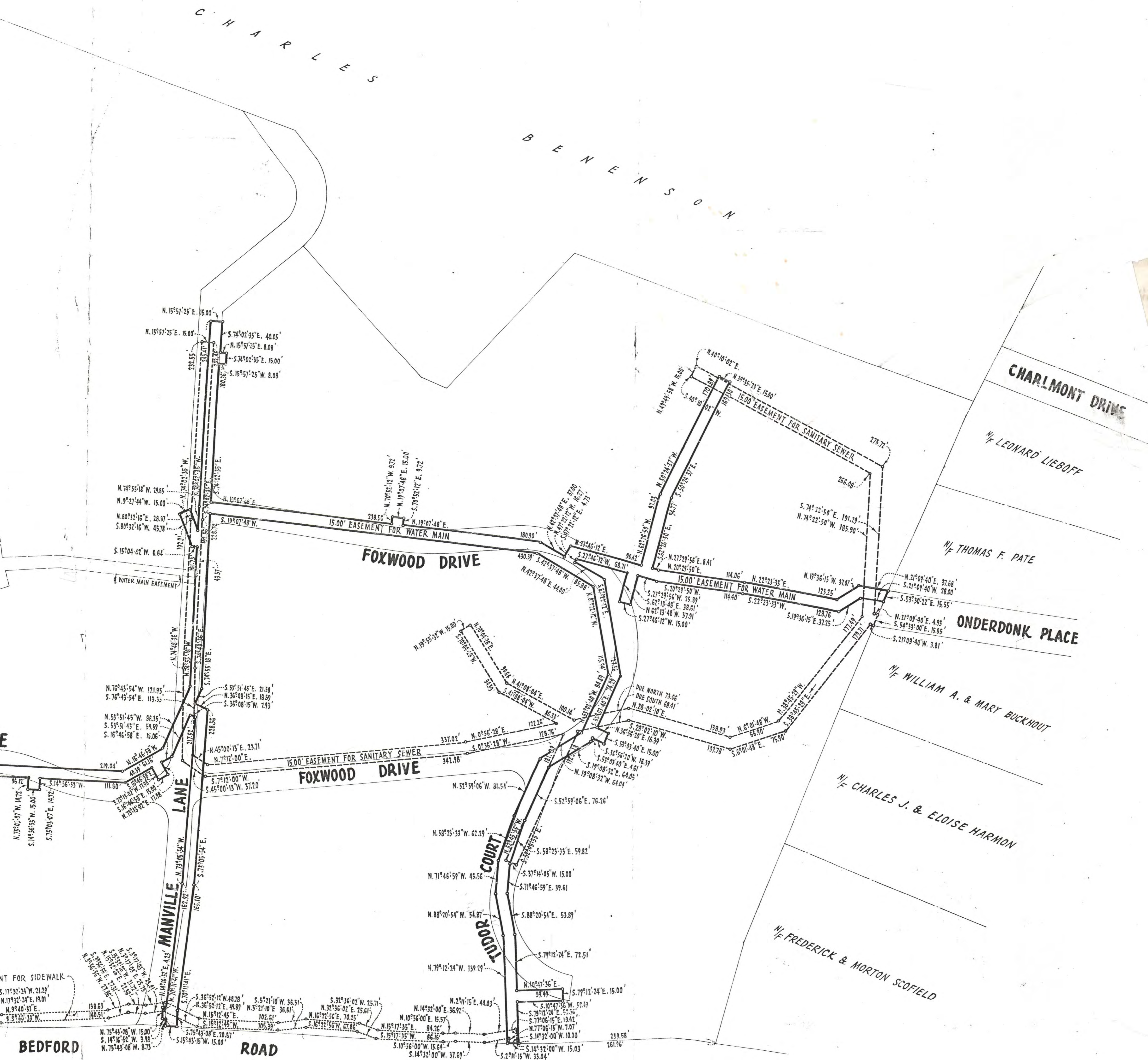
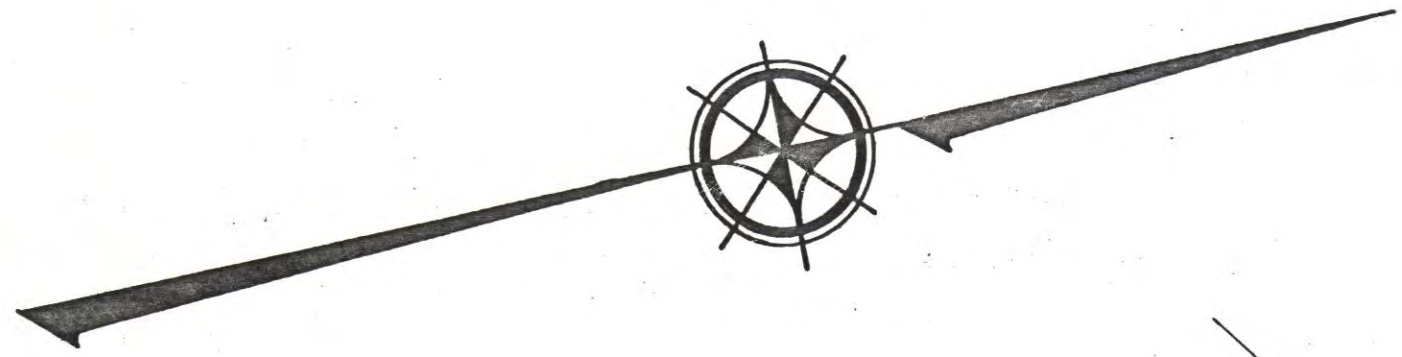


**SCHEDULE 1**  
**MAP SHOWING EASEMENTS**  
 TO BE DEDICATED TO THE  
**VILLAGE OF PLEASANTVILLE**  
 SITUATED IN THE  
**VILLAGE OF PLEASANTVILLE - TOWN OF MOUNT PLEASANT**  
 WESTCHESTER COUNTY, N. Y.

SCALE 1"=60'

COUNTY BLOCKS 8727 & 8967 - SHEET 130





WASHINGTON AVENUE

NEW YORK

CATS KILL AQUEDUCT - LAND OF THE CITY OF

15.00' WATER MAIN EASEMENT PER FILED MAP NO. 13302

CAMPUS DRIVE

THOMAS A. & JOANNE HART

FOXWOOD DRIVE

VILLAGE OF PLEASANTVILLE

BEDFORD

According to Ches B. Sells  
Water - Sewer & Sidewalk  
Easements were delineated to  
Village of Pleasantville  
5/1/50  
J. W. Bloom

LEGEND

- SCHEDULE A 15' WATER MAIN EASEMENT
- SCHEDULE B 15' SEWER EASEMENT
- SCHEDULE C 10' SIDEWALK EASEMENT

I, J.F. SULLIVAN WHO MADE THIS MAP DO HEREBY CERTIFY THAT THE SURVEY ON WHICH THIS MAP IS BASED WAS COMPLETED JULY 31, 1979 AND THIS MAP WAS COMPLETED OCTOBER 1, 1979.

Joseph F. Sullivan  
NEW YORK STATE PROFESSIONAL ENGINEER



PREMISES HEREON BEING A PORTION OF PROPERTY SHOWN ON MAP ENTITLED "SUBDIVISION MAP FOXWOOD," FILED IN THE WESTCHESTER COUNTY CLERKS OFFICE, DIVISION OF LAND RECORDS FEB. 14, 1977 AS MAP NO. 1