

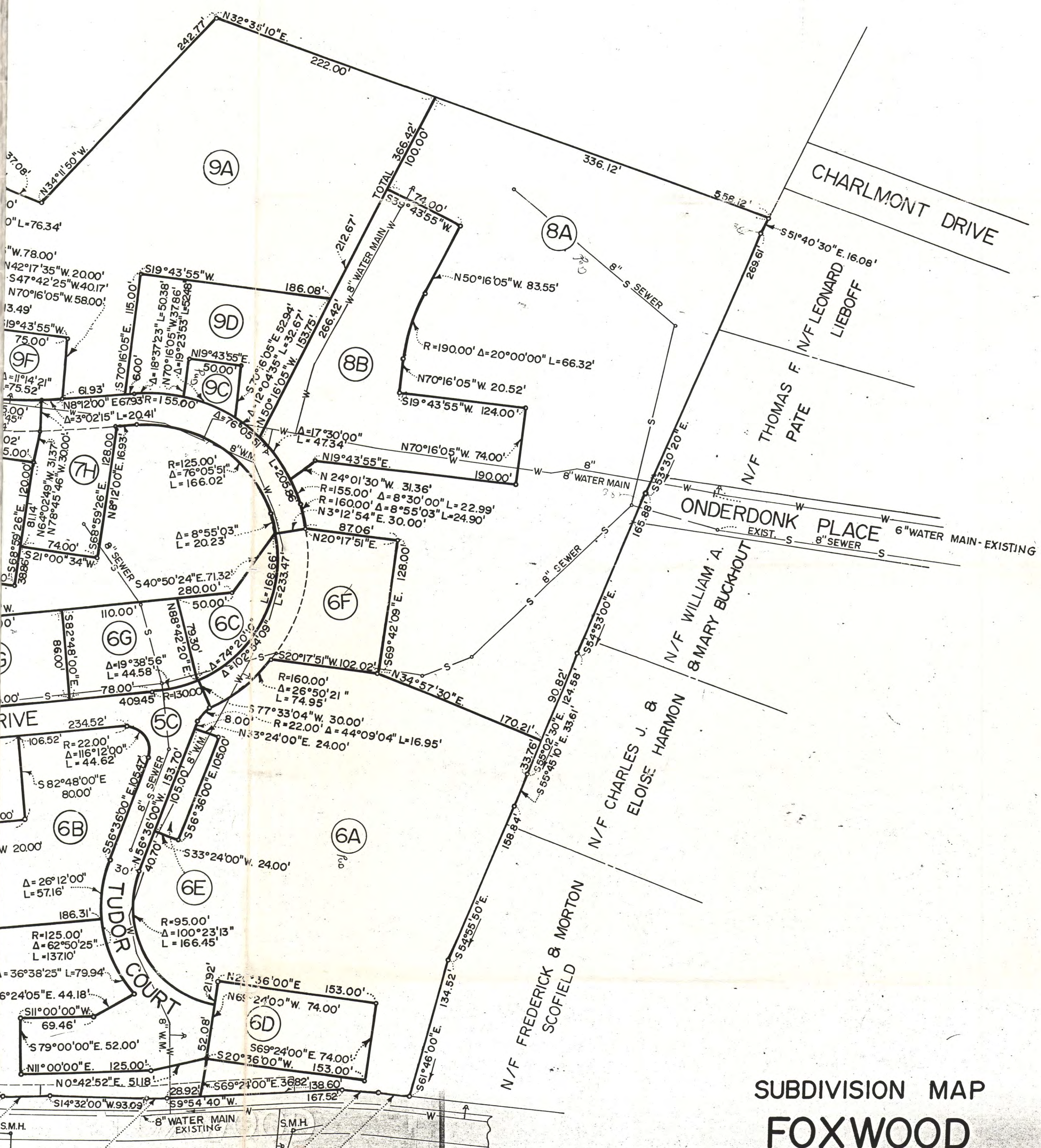
PARCEL AREAS		
PARCEL No	SQ. FT.	ACRES
1	231,219	5.3081
2	289,125	6.6374
3	148,914	3.4186
4	54,779	1.2576
5A	119,833	2.7510
5B	81,977	1.8819
5C	142,543	3.2723
6A	98,589	2.2633
6B	29,130	0.6687
6C	5,642	0.1295
6D	11,322	0.2599
6E	2,520	0.0579
6F	16,570	0.3804
6G	9,899	0.2273
7A	181,497	4.1666
7B	100,608	2.3096
7C	54,255	1.2455
7D	23,590	0.5416
7E	22,330	0.5126
7F	13,181	0.3026
7G	10,879	0.2497
7H	17,743	0.4073
7J	14,547	0.3340
8A	133,291	3.0599
8B	32,262	0.7406
9A	113,805	2.6126
9B	70,547	1.6195
9C	2,193	0.0503
9D	17,471	0.4011
9E	3,148	0.0723
9F	4,734	0.1087
9G	27,886	0.6402
10A	20,676	0.4747
10B	16,424	0.3770
11	13,800	0.3168
12	29,776	0.6836
13	24,783	0.5689
TOTAL AREA	2,201,729	50.5447

SCHEDULE OF PARCELS	
PARCEL NO.	PARCEL USE
1,2,3	CAMPUS OFFICE
4	VILLAGE RECREATION
5A,5B	RESIDENTIAL PHASE I
5C	ROADS & PARKING PHASE I
6A,6B,6C	RESIDENTIAL PHASE II SECTION I
6E,6D,6F,6G,6H	ROADS & PARKING PHASE II SECTION I
7A,7B,7C,7D,7E	RESIDENTIAL PHASE II SECTION 2
7F,7G,7H,7J	ROADS & PARKING PHASE II SECTION 2
8A	RESIDENTIAL PHASE III SECTION I
8B	PARKING PHASE III SECTION I
9A,9B,9C	RESIDENTIAL PHASE III SECTION 2
9D,9E,9F,9G	ROADS & PARKING PHASE III SECTION 2
10A	RESIDENTIAL PHASE IV
10B	PARKING PHASE IV
11	SWIMMING POOL
12	OPEN SPACE
13	ROAD - CAMPUS DRIVE

6H	10,240	0.2351
----	--------	--------

6H - SEE BELOW

BENENSON



**SUBDIVISION MAP**  
**FOXWOOD**  
 PROPERTY SITUATED IN THE  
**VILLAGE OF PLEASANTVILLE**  
 TOWN OF MOUNT PLEASANT WESTCHESTER COUNTY, N.Y.

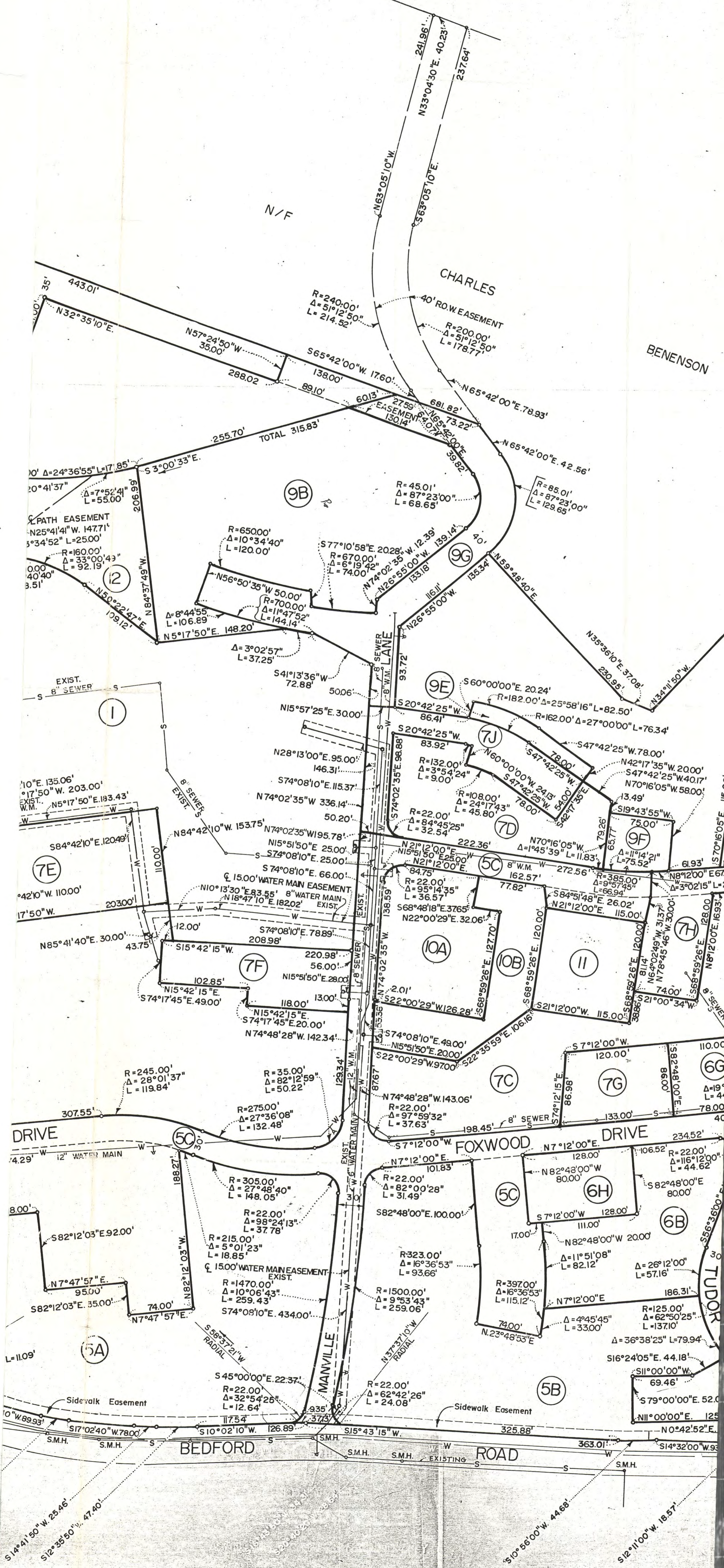
Note: This map filed in the West Co. Clerk's Office,  
 Division of Land Records... Feb. 14, 1977 as Map No. 19051

SCALE 1"=60'  
 COUNTY BLOCK 8727 & 8967 SHEET NO. 120 & 130

ON AVENUE

COMP (22.55 DEED)

R



N/F

CHARLES

BENENSON

9B

9C

9E

9F

9G

1

7E

7F

7D

7C

7B

7A

7H

7G

7I

7J

7K

7L

7M

7N

7O

7P

DRIVE

FOXWOOD DRIVE

DRIVE

BEDFORD ROAD

MANVILLE

TUDOR

5A

5B

5C

5D

5E

5F

5G

5H

5I

5J

5K

5L

5M

5N

5O

5P

5Q

5R

5S

5T

5U

5V

5W

5X

5Y

5Z

5AA

5AB

5AC

5AD

5AE

5AF

5AG

5AH

5AI

5AJ

5AK

5AL

5AM

5AN

5AO

5AP

5AQ

5AR

5AS

5AT

5AU

5AV

S.M.H.

S.M.H.

S.M.H.

S.M.H.

S.M.H.

S.M.H.

S.M.H.

S.M.H.

S.M.H.

S.M.H.

S.M.H.

S.M.H.

S.M.H.

S.M.H.

S.M.H.

S.M.H.

S.M.H.

S.M.H.

S.M.H.

S.M.H.

S.M.H.

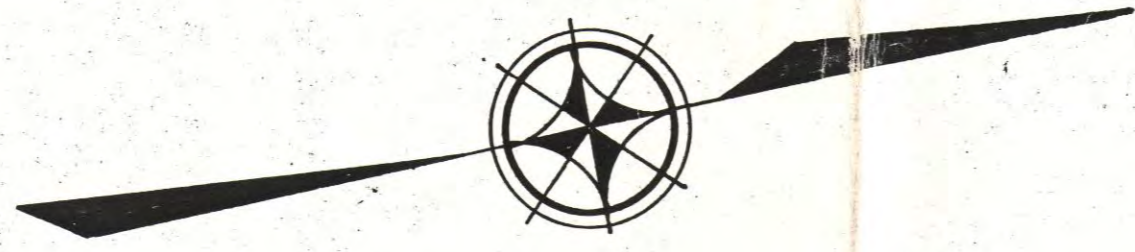
S.M.H.

S.M.H.

S.M.H.

Map filed in the West Coast Office of the Department of Public Works, City of Los Angeles, California.

NOV 1975



**SIDEWALK EASEMENT ALONG BEDFORD ROAD**

THE EASEMENT SHOWN ON THIS PLAN SHALL CONTAIN A SIDEWALK PRESENTLY DESIGNED FOR CONSTRUCTION BY BAKER FIRESTONE INC. UPON CONSTRUCTION A MEETS AND BOUNDS EASEMENT WILL BE COMPUTED, MAPPED AND DEEDS PREPARED FOR THIS SIDEWALK "AS BUILT" AND TENDERED TO THE VILLAGE OF PLEASANTVILLE FOR DEDICATION PURPOSES. THE EASEMENT SHALL BE 10' WIDE CENTERED ON THE SIDEWALK.

**UTILITIES SHOWN ON MAP**

WHERE UTILITIES ARE NOT LABELED AS EXISTING, THEY SHALL BE CONSIDERED AS PROPOSED. ALL UTILITIES SHOWN WILL BE DEDICATED TO THE VILLAGE OF PLEASANTVILLE. SEE NOTE ON UTILITY EASEMENTS.

THE ACCESSORY USES PROVIDED FOR IN SECTION 14-2 PARAGRAPH a AND b OF THE VILLAGE OF PLEASANTVILLE ZONNING ORDINANCE-APPENDIX B SHALL BE MEASURED FOR LOTS 2 AND 3 APPROVED BY THE VILLAGE OF PLEASANTVILLE PLANNING COMMISSION AND DESIGNATED ON THE APPROVED SITE PLAN FOR THESE LOTS.

**UTILITY EASEMENTS**

PROPOSED SANITARY SEWER LINES AND WATER MAINS ARE SHOWN ON THIS PLAN AS PRESENTLY DESIGNED FOR CONSTRUCTION BY BAKER FIRESTONE, INC. UPON CONSTRUCTION, MEETS AND BOUNDS EASEMENTS WILL BE COMPUTED, MAPPED AND DEEDS PREPARED FOR THESE LINES "AS BUILT", AND TENDERED TO THE VILLAGE OF PLEASANTVILLE FOR DEDICATION PURPOSES PRIOR TO FINAL ACCEPTANCE OF THESE FACILITIES BY THE VILLAGE. UTILITY EASEMENTS SHALL BE 15' WIDE, CENTERED ON THE PIPE, DESIGNATED FOR MAINTENANCE AND REPAIR PURPOSES ON VILLAGE OWNED PIPELINES.

WESTCHESTER COUNTY DEPARTMENT OF HEALTH  
WHITE PLAINS, NEW YORK

APPROVED SUBJECT TO PROVISION OF PUBLIC WATER SUPPLY AND PUBLIC SEWAGE DISPOSAL FACILITIES TO SERVE EACH HABITABLE BUILDING HEREAFTER CONSTRUCTED TO BE INSTALLED IN ACCORDANCE WITH IMPROVEMENT PLANS ON FILE IN THIS OFFICE.

EACH PURCHASER OF PROPERTY SHOWN HEREON SHALL BE FURNISHED A TRUE COPY OF MAP SHOWING THIS ENDORSEMENT ANY ERASURES, CHANGES ADDITIONS OR ALTERATIONS OF ANY KIND, EXCEPT THE ADDITION OF SIGNATURES OF OTHER APPROVING AUTHORITY AND THE DATE THEREOF MADE ON THIS PLAN AFTER THE DATE OF THIS APPROVAL, SHALL INVALIDATE THIS APPROVAL.

RECOMMENDED BY:

*Calvin J. Decker* RE.  
DATE *Feb 10, 1977*  
*John J. Helma*  
COMMISSIONER OF HEALTH

PROPERTY SHOWN HEREON IS SUBJECT TO RULES AND REGULATIONS FOR THE PROTECTION FROM CONTAMINATION OF THE CITY OF YONKERS WATER SUPPLY AND ITS SOURCES.

APPROVED FOR SUBDIVISION AND FILING  
BAKER FIRESTONE INC.

BY *W. A. O'Neil* TITLE PRESIDENT  
316 COURTLAND AVE, STAMFORD, CONN.

APPROVED BY THE PLANNING BOARD OF THE VILLAGE OF PLEASANTVILLE BY RESOLUTION.

*Robert C. Lenhard*  
CHAIRMAN  
Jan. 5, 1977.

Revised January 4, 1977  
PREPARED NOV. 1976

WE, CHAS. H. SELLS, INC. THE SURVEYORS WHO MADE THIS MAP DO HEREBY CERTIFY THAT THE SURVEY ON WHICH THIS MAP IS BASED WAS COMPLETED AUGUST 26, 1976 AND THIS MAP WAS COMPLETED NOVEMBER 19, 1976

PREPARED NOVEMBER 19, 1976  
CHAS. H. SELLS, INC.

